



ERTH





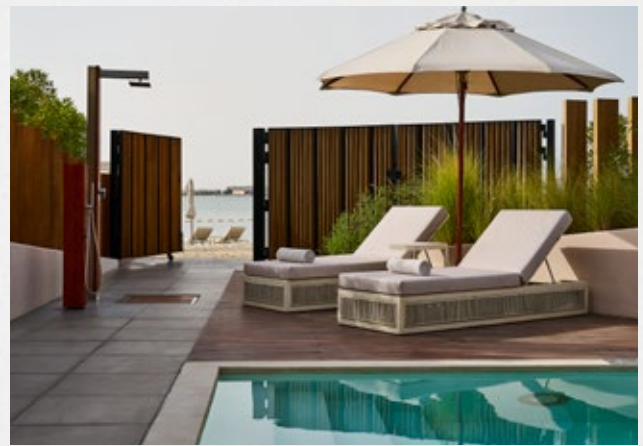
ABOUT EARTH

Bearing a name that means "legacy" in Arabic, Erth is a modern oasis of bespoke Emirati hospitality, cuisine and recreation that builds upon the enduring legacy of the founding father of the UAE, His Highness Sheikh Zayed bin Sultan Al Nahyan. This unique landmark destination features an unrivalled mix of rich heritage, a proud history spanning 25 years and personalised services and facilities. Erth stays true to its age-old mission of providing guests with the highest quality of traditional Emirati hospitality from the heart of Abu Dhabi.

LOCATION

Erth is a 15 minutes drive from Zayed International Airport and offers easy access to the city and all major highways.

- 10 minutes to Abu Dhabi National Exhibition Centre
- 5 minutes to Sheikh Zayed Grand Mosque
- 15 minutes to main shopping & tourist attractions



ACCOMMODATION

Each room type is an expression of elegance and uniquely conceptualised to offer a charming, comfortable stay. Guests residing in premium rooms, Suites and Villas have access to the Al Rayeh Club Lounge and a personal host (Mudeef) to provide timely assistance as required.

AMENITIES

- 24-hours room service
- Mini bar
- Tea and espresso maker
- Daily International newspaper
- Cable/satellite TV
- Ironing board and iron
- Bluetooth speaker
- USB chargers
- Complimentary high speed Wi-Fi
- 24/7 laundry services
- In house florist
- In-room safe

| ACCOMMODATION TYPES | TOTAL |
|-------------------------------|-------|
| Rooms | 237 |
| Suites | 42 |
| One Bedroom Beach Villa | 4 |
| One Bedroom Pool Villa | 4 |
| Two Bedroom Pool Villa | 4 |
| Erth Three Bedroom Pool Villa | 1 |



CLUB & RECREATION

Erth features comprehensive amenities and leisure facilities. These include a Blue Flag certified private beach, resort pool, and an indoor and outdoor recreational hub under its Etizan Fitness brand

ETIZAN FITNESS

The 58,000 sqm expansive facility includes mixed gym, ladies wellness hub, 50m eight-lane Olympic sized indoor swimming pool, resort pool & beach, dedicated training studios, padel tennis facilities, outdoor artificial and natural football pitches, dedicated facilities for gymnastics, aerobics, squash, bowling, tennis, track and field, volleyball, and basketball complete the gamut of experiences.

ALWARYAH POOL & BEACH

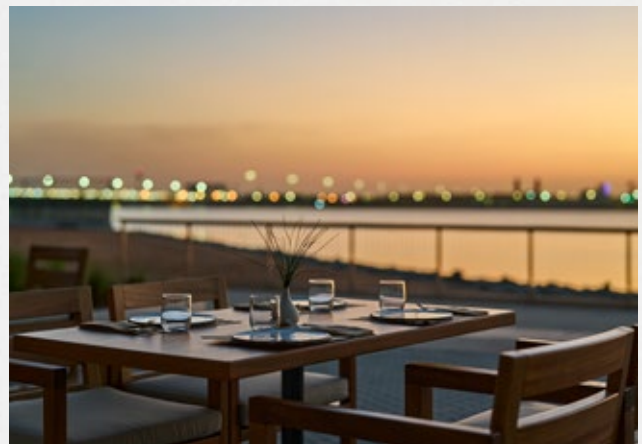
Experience the ultimate pool and beach lifestyle at Erth. Our residents and guests can indulge in the perfect combination of relaxation and fun. Soak up the sun and unwind on our pristine 350m-long private blue flag certified beach, or take a refreshing dip in one of our two oasis-shaped swimming pools. Whether you're with family, friends, or a loved one, Erth offers the perfect setting for a memorable and rejuvenating getaway.

WATER SPORT

Enjoy a variety of water sports at Erth, including kayaking, stand-up paddle boarding, jet skiing and more.

SPA

Steam bath, jacuzzi and massage therapists provide full relaxation and support speedy recovery post-workout sessions.



DINING

AL RIMAL

The resort's all-day dining restaurant features Emirati and Khaleeji specialities, as well as international favourites. Diners can savour comfort food and refined beverages indoors or outdoors overlooking Al Fayy, the central garden.

RAMSA

Inspired by the joy of conversational exchange between friends, colleagues and loved ones, Ramsa boasts sweeping views of the central garden and the sea beyond. Offering authentic, casual dishes and refreshing beverages, the venue is a vibrant location suited for evening gatherings indoors and outdoors.

BEETZA

A modern Italian eatery that honours pizza. Guests can indulge in a range of authentic Neapolitan pizza paired with hot and cold beverages.

ASRAH

Situated at the Al Waryah main pool, Asrah treats guests to refreshing beverages, light snacks, and desserts.

BAHANIS

Located at the heart of the sports hub. With an emphasis on healthy cuisine and handcrafted beverages, it offers a casual atmosphere for enjoying refreshments indoor and out.

HIDD (OPENING SOON)

The resort's beachfront restaurant, located on the shoreline of the Arabian Gulf, offers a perfect vantage point to soak up the beauty of the sea. An appealing à la carte menu for lunch and dinner showcases the very best local flavours.

ERGON DELI & CAFÉ

Rooted in the Greek word denoting vocation, Ergon embodies a commitment to premium-quality Greek products steeped in traditional Mediterranean craftsmanship, reflecting deep respect for heritage. Ergon delivers an elevated experience where aesthetic and gastronomic values converge seamlessly.



CONFERENCE & EVENT

We take great pride in our eclectic range of 17 high-specification venues, including a ballroom, cinema hall and theatre.

ERTH BALLROOM

Offering spatial versatility, modern facilities and professional support teams ensure that every event is beautifully designed, seamlessly executed, and truly memorable. The vast 2,800 sqm event and meeting area features three flexible spaces: Erth Ballroom and two adjacent rooms, Sharq and Gharb, equipped with modern facilities and professional support teams. State-of-the-art lighting, audio, and translation systems guarantee a professional production experience. We offer 600 parking spaces within walking distance and an optional valet service for guests convenience.

WEDDING

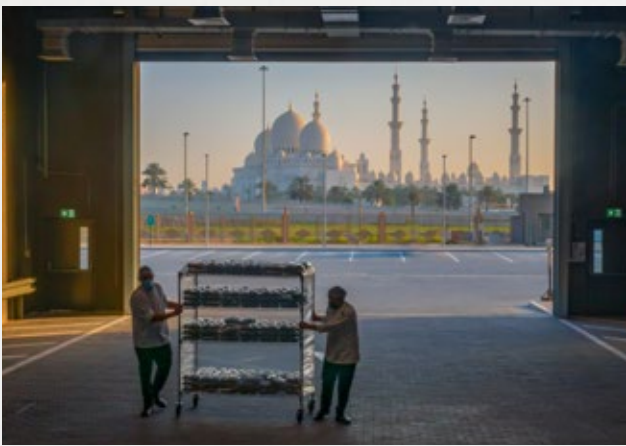
With its spacious, elegant ballroom, landscaped gardens and contemporary catering facilities, Erth is one of the region's pre-eminent wedding

venues making every moment of your special occasion unforgettable. Our experienced team of wedding planners and event specialists stand ready to help you honour the most special of lifetime experiences. They are committed to ensuring that every couple, along with their families and guests, enjoy a truly memorable occasion from the moment of their arrival through to the last dance of the evening. If your festivities will extend for days, as is common in many cultures, we are fully equipped to accommodate your needs and deliver a quality event from beginning to end.

AL FAYY GARDEN

Provides an inviting leisure retreat for all, with its wide landscapes, green spaces and water features. In addition, Al Fayy can function as an open-air extension to the ballroom, creating a charming oasis suited for outdoor receptions or performances during weddings and other functions.

| VENUES | SIZE (SQM) | U-SHAPE | BLOCK | CLASSROOM | THEATRE | BANQUET | COCKTAIL | MAJLIS | EXHIBITION |
|--------------------------------------|-------------------|----------------|--------------|------------------|----------------|----------------|-----------------|---------------|-------------------|
| STAND-ALONE BALLROOM | | | | | | | | | |
| Erth Ballroom 1, 2 & 3 | 1,587 | 240 | 300 | 720 | 1,350 | 900 | 1,800 | | |
| Erth Ballroom 1 | 529 | 80 | 100 | 240 | 450 | 300 | 600 | | |
| Erth Ballroom 2 | 529 | 80 | 00 | 240 | 450 | 300 | 600 | | |
| Erth Ballroom 3 | 529 | 80 | 100 | 240 | 450 | 300 | 600 | | |
| Sharq Breakout Room 1 & 2 | 455 | 75 | 90 | 200 | 370 | 260 | 570 | | |
| Sharq Room 1 | 225 | 38 | 45 | 100 | 185 | 130 | 285 | | |
| Sharq Room 2 | 230 | 38 | 45 | 100 | 158 | 130 | 285 | | |
| Gharb Breakout Room 1 & 2 | 455 | 75 | 90 | 200 | 370 | 260 | 570 | | |
| Gharb Room 1 | 225 | 38 | 45 | 100 | 185 | 130 | 285 | | |
| Gharb Room 2 | 230 | 38 | 45 | 100 | 158 | 130 | 285 | | |
| Al Khidr Bridal Suite | | | | | | | | 12 | |
| GROUND FLOOR | | | | | | | | | |
| Al Fayy Garden | | | | | 2,000 | | 2,000 | 1,000 | |
| Al Jaheli Conference 1 | 122 | 20 | 20 | 20 | 30 | | | | |
| Al Jaheli Conference 2 | 138 | 30 | 20 | 40 | 50 | | | | |
| FIRST FLOOR | | | | | | | | | |
| Abu Mousa Hall | 1,890 | | | | | 1,500 | 3,000 | | |
| Greater Tunb Hall | 832 | | | | | 500 | 600 | 500 | 330 |
| Lesser Tunb Hall | 576 | 40 | 30 | 150 | 200 | 200 | 200 | 100 | |
| Al Hisn Hall 1 | 40 | 20 | 20 | | | | | | |
| Al Hisn Hall 2 | 40 | 20 | 20 | | | | | | |
| Al Hisn Hall 3 | 40 | 20 | 20 | | | | | | |
| Al Hisn Hall 4 | 40 | 20 | 20 | | | | | | |
| Cinema | 326 | | | | 166 | | | | |
| Al Jaheli Theatre | 825 | | | | 631 | | | | |
| THIRD FLOOR | | | | | | | | | |
| Hafeet Terrace | 352 | | | | | | 100 | | |
| Al Fehaidi Hall | 576 | 40 | 30 | 150 | 200 | 200 | 200 | 200 | |
| Murajib Hall | 576 | 40 | 30 | 150 | 200 | 200 | 200 | 200 | |
| Seer Bu Nair Island Hall | 148 | 20 | 20 | 40 | 50 | 40 | 50 | 24 | |
| Al Meel Hall | 148 | | 18 | | | | | | |
| Seer Bani Yas Hall | 148 | 20 | 20 | 40 | 50 | 40 | 50 | 24 | |



CATERING AND HOSPITALITY SERVICES

ERTH HOSPITALITY

Erth exemplifies a philosophy of hospitality by accessing the best in class professional knowledge and technology in the industry and remains committed to providing guests and clients with unique memorable experiences whilst strengthening the brand's reputation as a leader in catering and hospitality services.

KEY FACTS

Area: 9,000sqm facility with a capacity of 100,000 meals per day

Logistics: Adjacent to the logistics hub for direct supply chain and fleet management vehicles equipped with 'Temp Track' wireless monitoring and GPS

Equipment: Modern cooking machinery increasing efficiency by 50%

Production Process: Cook & Hold, Cook & Chill

Team: Diverse team of 150 chefs from over 50 countries

Technology: ERP (Electronic Resource Planning) of over 17,000 recipes with nutritional values

Certification: ISO 9001:2015, ISO 14001:2015, ISO 45001:2018, ISO 22000:2018, HACCP, FSSC 22000 and corporate member of BICSc

Additional Features: Kitchen Academy, Innovation Lab

ERTH

PO. BOX: 29810, ABU DHABI, UNITED ARAB EMIRATES
TEL:+971 2 441 5900 | TOLL FREE: 800ERTH[3784]
igrab@erth.ae
erth.ae