

# ASSILA, A LUXURY COLLECTION HOTEL, JEDDAH

A MODERN MASTERPIECE IN THE HEART OF JEDDAH

# THE LUXURY COLLECTION

SOME TRAVEL AS A MEANS TO ESCAPE ROUTINE OR  
REWARD HARD WORK.

OTHERS YEARN FOR SOMETHING DEEPER, SOMETHING  
MORE IMMERSIVE.

THEY ARE TRAVELERS AND EXPLORERS. THEY TRAVEL TO  
BE TOUCHED BY NEW CULTURES, TO CONNECT WITH  
DIFFERENT PEOPLE, TO EXPERIENCE OTHER WORLDS,  
AND FEEL TRANSFORMED BY THE EXPERIENCE.

UNIQUE AND INDIGENOUS, THE LUXURY COLLECTION  
PROPERTIES INVITE CURIOSITY – THEY ENCOURAGE  
EXPLORATION BEYOND THE BEATEN PATH.

WE CONSIDER OURSELVES FORTUNATE TO HOST THESE  
EXPLORERS AS THEY EMBARK ON JOURNEYS AS  
TRANSFORMATIVE AS THEY ARE UNFORGETTABLE.



Hotel Marques de Riscal, a Luxury Collection Hotel, Elciego



The Gritti Palace, a Luxury Collection Hotel, Venice



Hotel Alfonso XIII, a Luxury Collection Hotel, Seville

# ASSILA, A LUXURY COLLECTION

A RARE FIND. AN AUTHENTIC TREASURE. AN UNSURPASSED COLLECTION.

OUR MISSION IS TO GUIDE OUR GUESTS ON TRANSFORMATIVE JOURNEYS THAT TOUCH THEIR SPIRITS AND ENRICH THEIR LIVES.

THE EPITOME OF UNDERSTATED OPULENCE AND EXCLUSIVITY, ASSILA, A LUXURY COLLECTION HOTEL, IS A CELEBRATION OF THE CITY'S PROGRESS.

A MODERN MASTERPIECE THAT ARTFULLY BLENDS TRADITIONAL ARABIAN HOSPITALITY WITH CONTEMPORARY SOPHISTICATION.

LUXURIOUSLY SPACIOUS ROOMS & SUITES FLAWLESSLY FURNISHED, WITH SPECTACULAR CITY VIEWS, PRESENT A PICTURE OF REFINED ELEGANCE AND UNPRECEDENTED COMFORT.

ENCHANTING SPA, ROOFTOP POOL, SPORTING FACILITIES AND GLOBAL GASTRONOMY CATER TO EVERY EXTRAVAGANT WISH, WANT OR WHIM.



# LOCATION

---

## LOCAL AREA HIGHLIGHTS

AL BALAD IS A MUST PLACE TO VISIT IF YOU WANT TO EXPERIENCE THE HISTORICAL ASPECT OF JEDDAH (**15 mins drive**)

INDULGE THROUGH THE LUXURY RETAIL SHOPS IN STREET KHAYAT CENTER (**9 mins drive**)

JEDDAH PARK CENTER (**9 mins drive**)  
BOULEVARD (**12 mins drive**)

EXPERIENCE JEDDAH WATERFRONT AT THE CORNICHE (**20 mins drive**)

TAKE A DAY TRIP BY EXPLORING THE REEFS FOR SNORKELING, DIVING, AND FISHING AMONG JEWELS OF THE RED SEA (**35 mins drive**)



# EXPLORE JEDDAH

---

LOCATED IN JEDDAH'S MOST AFFLUENT DISTRICT, THIS DISTINGUISHED FIVE-STAR HOTEL IS A LANDMARK DESTINATION FOR DISCERNING TRAVELLERS.

LIKE A PROLIFIC STORYTELLER OUR CONCIERGE HELPS BRING THE JOURNEY AND NARRATIVE OF ASSILA TO LIFE THROUGH CURATED EXPERIENCES FULL OF INTRIGUE AND EXCITEMENT.



# LOBBY

THE EPITOME OF UNDERSTATED OPULENCE AND EXCLUSIVITY, ASSILA, A LUXURY COLLECTION HOTEL, IS A CELEBRATION OF THE CITY'S PROGRESS.

A MODERN MASTERPIECE THAT ARTFULLY BLENDS TRADITIONAL ARABIAN HOSPITALITY WITH CONTEMPORARY SOPHISTICATION.



# HOTEL & RESIDENCES

LUXURIOUS SPACIOUS ACCOMMODATIONS, FLAWLESSLY FURNISHED, WITH SPECTACULAR CITY VIEWS, PRESENTS A PICTURE OF REFINED ELEGANCE AND UNPRECEDENTED COMFORT.

## FEATURED AMENITIES ON-SITE

RESTAURANT

OUTDOOR POOL

TURNDOWN SERVICE

DRY CLEANING SERVICE

ROOM SERVICE

KITCHENETTE

SPA

24 HOUR ROOM SERVICE

BUSINESS CENTER

LAUNDRY

WAKE UP CALLS

SERVICE REQUEST

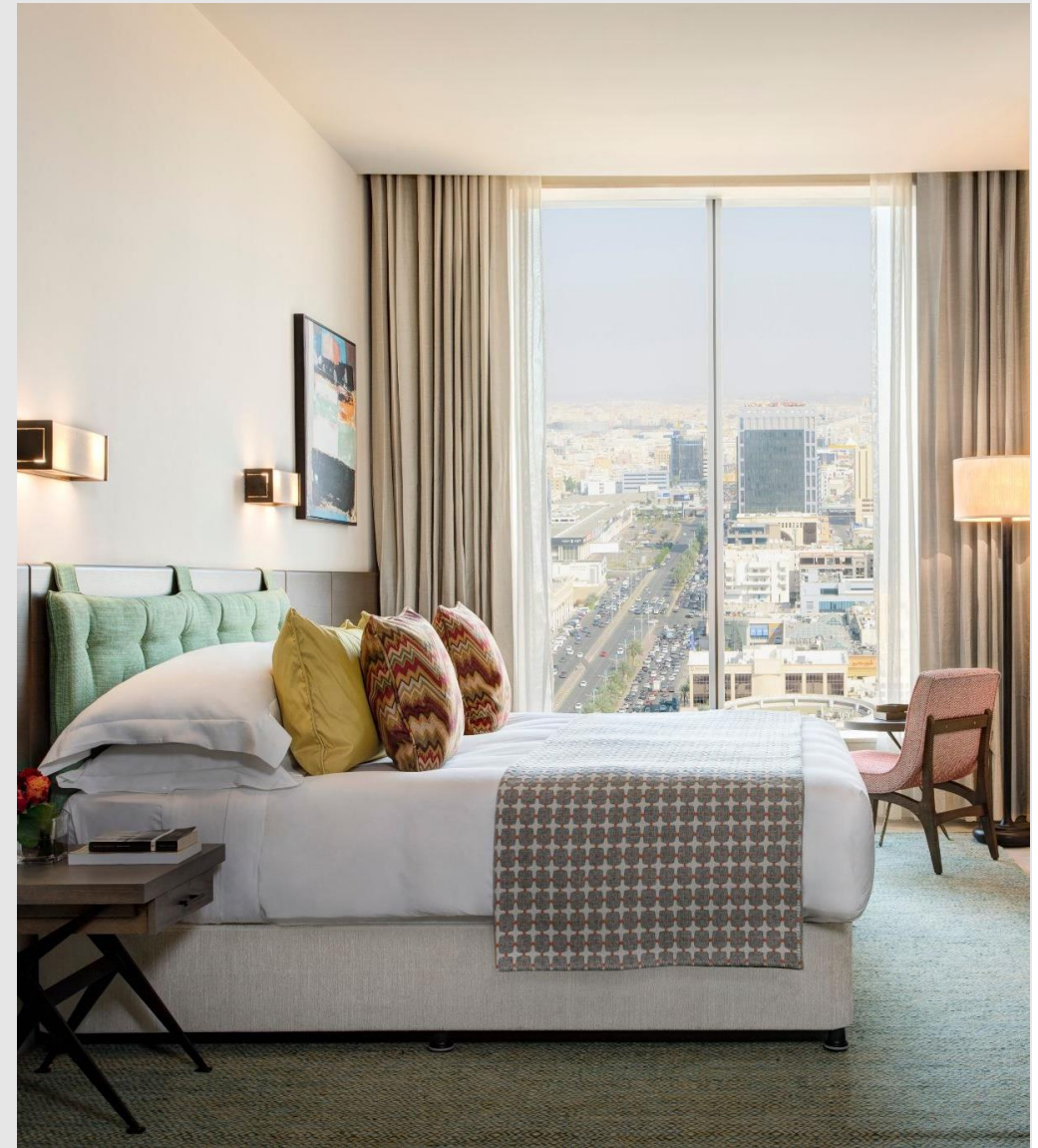
FITNESS CENTER

DAILY HOUSEKEEPING

MEETING SPACE

KITCHEN

FREE COFFEE/TEA



# HOTEL & RESIDENCES

---

RELAX AND RECHARGE IN THE BEAUTIFULLY-DESIGNED, LUXURY HOTEL ROOMS AND SUITES IN TAHLIA STREET.

GET A SOUND NIGHT'S SLEEP IN OUR NEW HOTEL ACCOMMODATIONS WITH LUXURY LINENS AND INDULGENT BEDDING.

STAY CONNECTED WITH FAMILY AND WORK WHILE IN JEDDAH WITH THE FREE WI-FI.

ALL ROOMS ARE ENRICHED WITH HAND-WOVEN RUGS & TAPESTRIES THAT DEFINE SAUDI'S RICH HISTORY OF CRAFTS.

ELEGANT SUITES & ROOMS EMBODY A LUXURY LIFESTYLE WITH TALL WINDOWS OVERLOOKING THE CITY OF JEDDAH.

HOTEL GUESTS CAN ALSO TAKE ADVANTAGE OF OUR SPA FACILITIES FOR HIM AND HER.



# ACCOMMODATIONS



EXECUTIVE SUITE (BATHROOM)



EXECUTIVE SUITE (LIVING ROOM) 136 Sqm<sup>2</sup>



ROYAL SUITE 658sqm<sup>2</sup>



EXECUTIVE SUITE (BEDROOM) 136 Sqm<sup>2</sup>



Panoramic suite 87 Sqm<sup>2</sup>



EXECUTIVE ROOM (KING) FROM 44sqm<sup>2</sup> - 47 Sqm<sup>2</sup>

# RESIDENCE



LUXURY, THREE BEDROOM RESIDENCE 172 Sqm<sup>2</sup>



FULLY EQUIPPED KITCHEN



LUXURY, 2 BEDROOM RESIDENCE



LUXURY, ONE BEDROOM RESIDENCE, 57 – 95 Sqm<sup>2</sup>



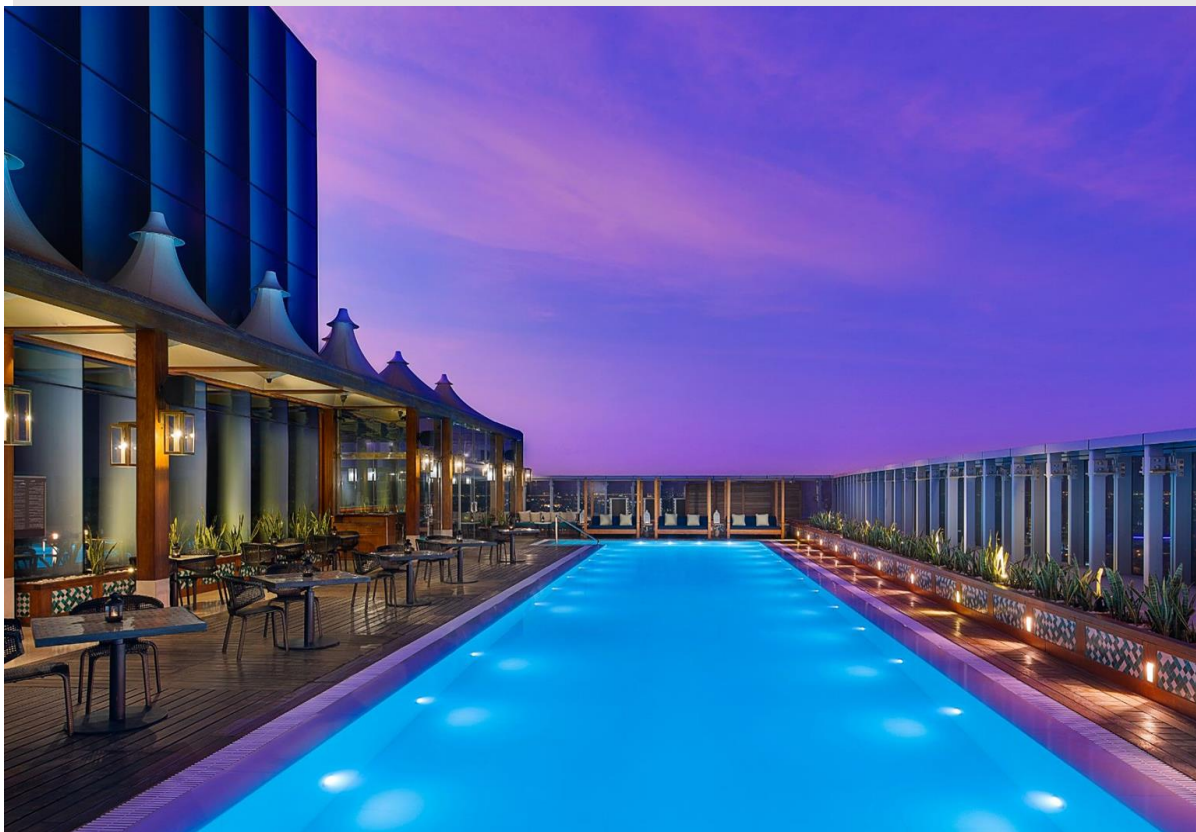
LUXURY, TWO BEDROOM RESIDENCE 172 Sqm<sup>2</sup>



LUXURY, 4 BEDROOM AMBASSADOR RESIDENCE 255m<sup>2</sup>

# ROOFTOP POOL

---



OUR MISSION: TO GENUINELY ENLIGHTEN GUESTS WITH LOCALLY ROOTED FLAVOURS AND EPICUREAN EXPERIENCES.



INDIGENOUS  
EXPERIENCES

LOCAL FLAVORS AND PEERLESS RENDITIONS OF TRADITIONAL CUISINES INVITE GUESTS TO SAVOR SIGNATURE REGIONAL DELICACIES. ENCHANTING DECÓR, IMBUED WITH AUTHENTIC DETAILS, AND OPPORTUNITIES TO WITNESS THE DISTINCTIVE RITUALS OF A LOCALE'S CULINARY CREATIONS DELIVER IMMERSIVE CULTURAL DINING EXPERIENCES.



RARE &  
TRANSFORMATIVE

WITH UNEXPECTED OFFERINGS AND SINGULAR SENSORY MOMENTS, EACH FOOD & BEVERAGE EXPERIENCE IS SELECTIVELY CHOSEN TO CREATE A DISTINCTIVE DINING EXPERIENCE THAT CIRCUMVENTS EXPECTATIONS AND CREATES AN INDELIBLE SENSORY MEMORY.



STORIED  
& ENGAGING

EVERY DETAIL — FROM DISHWARE TO INGREDIENTS TO PRESENTATION — IS IMMERSIVE IN THE HERITAGE AND NARRATIVE OF THE LOCALE, WEAVING A HOLISTIC NARRATIVE THAT INVITES CURIOSITY AND NEVER FEELS CORPORATE. THESE DINING EXPERIENCES NOURISH NOT ONLY THE BODY BUT ALSO THE SOUL.

ASSILA LUXURY COLLECTION, A BEACON WITHIN THE CITY OF JEDDAH.

# OUTLETS

---



# IL CAFFE

---

IL CAFFE GREETES ITS GUESTS WITH AN EXCEPTIONAL EXPERIENCE OF THE PERFECT CUP OF ITALIAN ESPRESSO.

GUESTS CAN RELAX AND ENJOY AN ENGAGING FOOD MENU OFFERING A WIDE VARIETY OF ITEMS RANGING FROM HEALTHY SANDWICHES AND SALADS TO SUSTAINING PASTAS AND SIGNATURE BURGERS WHILE EXPERIENCING HANDCRAFTED MOCKTAILS AND HOME-MADE BREWS.

IL CAFFE SPECIALIZES IN A DAILY AFTERNOON TEA THAT IS UNMISSABLE SHOWCASING AN AMAZING ARRAY OF RICH AND ELEGANT PASTRIES AND DESSERTS.



# TWENTYFOUR

---

TWENTYFOUR IS AN INTERNATIONAL BUFFET RESTAURANT THAT LIES ON THE 2ND FLOOR WITH FLOOR TO CEILING WINDOWS THAT OFFER A VIEW OF ALTAHLIYA. WHILST ENJOYING BREAKFAST WITH A DOSE OF SUNSHINE, GUESTS CAN ENJOY A VARIETY OF FOOD OPTIONS FROM THE BUFFET AND INTERACT WITH CHEFS AT LIVE STATIONS.

DON'T MISS OUT ON SURF N TURF SATURDAYS, WHERE GUESTS CAN ENJOY AN EVENING BUFFET WITH FRESHLY GRILLED BBQ ITEMS AND SUSHI.



# PAMPAS

---

PAMPAS OFFERS A BROADER APPROACH TO LATIN AMERICAN CUISINE WHERE OUR CHEFS WORK INTUITIVELY WITH FIRE AND GREAT INGREDIENTS.

WE BURN SPECIALLY SELECTED ACACIA WOOD DAILY TO CREATE THE EMBERS THAT WE THEN USE TO ENHANCE THE NATURAL CHARACTERISTICS OF OUR PREMIUM DRY-AGED STEAKS.

OUR KITCHEN IS OPEN-PLAN, ALLOWING GUESTS A CLEAR VIEW OF THE ACTION WHICH UNFOLDS DURING THE EVENING. IT IS IMPORTANT FOR US TO INVITE DINERS INTO OUR WORLD TO SHOW THEM HOW SIMPLE COOKING CAN BE, AND HOW GOOD INGREDIENTS CAN BECOME GREAT INGREDIENTS WHEN GRILLED OVER A WOOD FIRE.

OFFERING THE BEST HAND-SELECTED STEAKS IN JEDDAH. WE FOCUS ON QUALITY INGREDIENTS GRILLED TO ORDER, COMBINED WITH GREAT DRINKS AND AN AMAZING ATMOSPHERE AND VIEW OF THE CITY SO YOU CAN ENJOY YOUR EVENING.

GUESTS CAN ENJOY A SPECIAL PAMPITA SUPPER NIGHT EVERY THURSDAY!



# MEETINGS & EVENTS

---

11 MEETING VENUES AT ASSILA, A LUXURY COLLECTION HOTEL.  
IT CAN HOST BOARD MEETINGS, CONFERENCE, AND OTHER HIGH- PROFILE EVENTS WITH A SPACIOUS 348M<sup>2</sup>

BALLROOM FOR UP TO 288 GUESTS FOR YOUR SPECIAL DAY



---

11  
EVENT ROOMS

---

849  
TOTAL EVENT  
SPACE

---

288  
CAPACITY  
LARGEST SPACE

# MEETINGS & EVENTS

---

## AUDIO VISUAL EQUIPMENT

LCD PANEL

LCD PROJECTOR

MICROPHONE

PA SYSTEM

TV

TV PRODUCTION SERVICE

PROVIDER

TELECONFERENCING

## EVENT EQUIPMENT & SUPPLIES

BLACKBOARDS

DIRECTION SIGNS

EASELS

FLIP CHART & MARKERS

INSTALLED STAGE

NAME CARDS

PENS/ PENCILS / NOTEPAD





### **Banquet**

Generally used for meals and sessions involving small group discussions. A five-foot round table seats up to eight people comfortably. A six-foot round table seats up to 10 people comfortably.



### **Conference and Hollow Square**

Appropriate for interactive discussions and note-taking sessions for fewer than 25 people. Many hotels have elegant “boardrooms” for 10 to 20 people, equipped with full audiovisual capabilities, a writing board, corkboard and a flip chart.



### **E-shape, U-shape, and T-shape**

Appropriate for groups of fewer than 40 people, these are best for interaction with a leader seated at the head of the setup. Audiovisual is usually best set up at the open end of the seating.

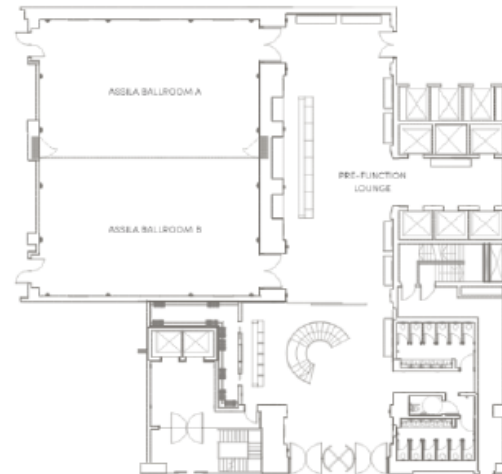


### **Theater**

Appropriate for large sessions and short lectures that do not require extensive note-taking. This is a convenient setup to use before breaking into discussion or role-playing groups because chairs can be moved.

# MEETING ROOMS & BANQUETS SPACES

	Size		Dimensions		Boardroom	Semi-Round	Classroom	Dinner	Hollow Square	Reception	Theatre	U-Shape
	m <sup>2</sup>	ft <sup>2</sup>	m l x w x h	ft l x w x h								
<b>Assila Hotel</b>												
<b>Assila Ballroom</b>	366	4169	21.8 x 17.7 x 3.6	71.5 x 58 x 11.8	240	120	300	240	240	600	500	200
Assila Ballroom A	193	2084	10.9 x 17.7 x 3.6	35.8 x 58 x 11.8	120	60	150	120	120	300	250	100
Assila Ballroom B	193	2084	10.9 x 17.7 x 3.6	35.8 x 58 x 11.8	120	60	150	120	120	300	250	100
<b>Pre-function Lounge</b>	187	2020	21.8 x 8.6 x 3.6	71.5 x 28.2 x 11.8	–	–	–	–	–	180	–	–
<b>Verdura Room</b>	160	1728	15.8 x 10 x 3.4	52 x 33 x 11.1	52	70	100	140	52	150	110	48
Verdura Room A	80	864	10 x 7.9 x 3.4	33 x 26 x 11.1	26	35	50	70	26	75	55	24
Verdura Room B	80	864	10 x 7.9 x 3.4	33 x 26 x 11.1	26	35	50	70	26	75	55	24
<b>Balmoral Room</b>	92	994	11.2 x 8.1 x 3.4	36.8 x 26.8 x 11.1	20	35	50	60	28	85	70	24
<b>De Russie Room</b>	92	994	11.2 x 8.1 x 3.4	36.8 x 26.8 x 11.1	20	35	50	60	28	85	70	24
<b>Charles Room</b>	35	378	8.2 x 4.2 x 3.4	27.2 x 13.9 x 11.1	16	20	25	20	20	55	25	–
<b>Brown's Room</b>	32	346	7.3 x 4.3 x 3.4	24.1 x 14.2 x 11.1	16	20	30	40	–	50	42	16
<b>Savoy Room</b>	32	346	7.3 x 4.3 x 3.4	24.1 x 14.2 x 11.1	16	20	30	40	–	50	42	16
<b>Amigo Room</b>	28	302	7.3 x 3.7 x 3.4	24.1 x 12.3 x 11.1	12	15	16	30	16	35	30	12
<b>Asteria Room</b>	28	302	7.3 x 3.7 x 3.4	24.1 x 12.3 x 11.1	12	15	16	30	16	35	30	12
<b>De Rome Room</b>	23	248	5.4 x 4.2 x 3.4	17.9 x 13.9 x 11.1	8	–	–	10	–	17	10	8
<b>Villa Kennedy Room</b>	23	248	5.4 x 4.2 x 3.4	17.9 x 13.9 x 11.1	8	–	–	10	–	17	10	8



# SQUASH COURT

---





THANK YOU